







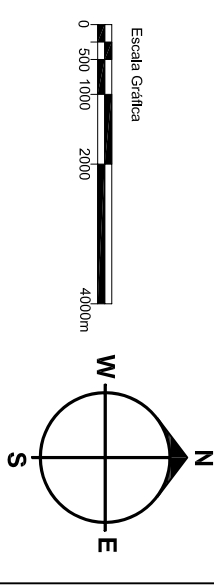
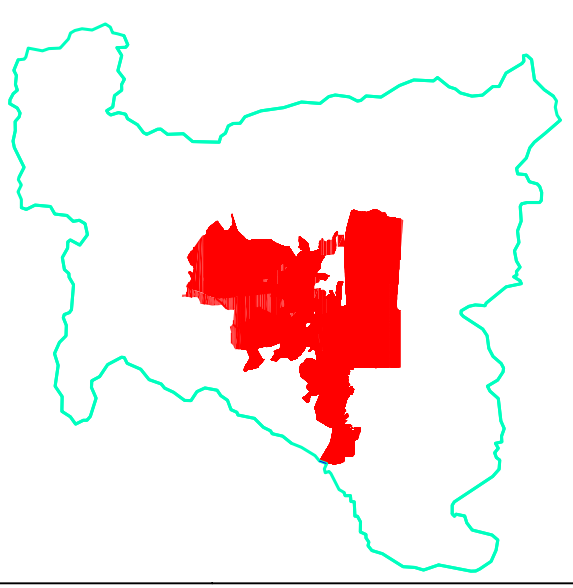


Legenda

-  limites municipais
-  vias urbanas e estradas municipais
-  setores censitários
-  sem uso - SUS
-  residencial unifamiliar - RES/U
-  sem uso - SUS
-  residencial misto - RES/M
-  misto em geral / MEG



PLANO DIRETOR 2006
 Prefeitura da Estância de Atibaia
 SECRETARIA DE URBANISMO E MEIO AMBIENTE

ÁREA URBANA PRINCIPAL

USO DO SOLO URBANO

PR - A.16.06